

# "TEMP-SET"® COVERS



Save manhours and energy dollars.  
Insulate with Temp-Set® Covers.



## SPECIFICATION CATEGORIES

1. Temp-Set 150-450° F Interior <sup>1</sup>
2. Temp-Set 150-450° F Exterior <sup>2</sup>
3. Temp-Set 150-450° F Haz. Envir. <sup>3</sup>
4. Temp-Set 450-1200° F Interior <sup>1</sup>
5. Temp-Set 450-1200° F Exterior <sup>2</sup>
6. Temp-Set 450-1200° F Haz. Envir. <sup>3</sup>
7. Temp-Set 1200-2300° F Interior <sup>1</sup>
8. Temp-Set 1200-2300° F Exterior <sup>2</sup>
9. Temp-Set 1200-2300° F Haz. Envir. <sup>3</sup>

<sup>1</sup> Interior - not exposed to weather

<sup>2</sup> Exterior - exposed to weather

<sup>3</sup> Haz. Envir. - caustic or acidic application



SUPERIOR ENERGIES, INC.

1-800-BUY-SE11

1-800-289-7341

Ph: 409-962-8549

Fax: 409-962-4027

## Removable/Reusable Thermal Insulation Systems

Constructed for any temperature or atmospheric environment, Temp-Set® Covers can usually be installed while process is on line. They are very durable, weather resistant and ideally suited for any area that requires frequent maintenance. Standard applications include heat exchangers, valves, manways, flanges, pumps, engine manifolds, engine exhausts, exhaust silencers and turbines. All covers are custom designed and guaranteed to fit closely to minimize heat loss.

Our trained representatives are available to assist you in developing insulation specifications to meet your requirements. A needled glass fiber core is central to the Temp-Set® Covers, this is ordinarily used for temperatures up to 1200° F. A ceramic fiber insulation is available for temperatures up to 2300° F. The thickness of the fiber core can vary from one to four inches, depending on the application.

A siliconized glass fiber is normally used for the covering of the fiber core. It is impervious to fuel and water. Stainless steel foil, \*Hypalon®, \*Teflon® (\*Registered trademark of I.E. Dupont De Nemours.) and other covering materials are available.

To reduce noise, barriers such as lead loaded or reinforced vinyl can be added for improved acoustical applications. The total composite is encapsulated in 304 stainless steel mesh (monel and inconel are also available). All accessories, such as lacing hooks and staples, are available in these materials.

Then Temp-Set® Covers are tagged with stainless steel embossed tags in order to offset any delays caused by misplaced blankets and aid in installations. Temp-Set® Covers can be manufactured using either a hog-ring staple manufacturing assembly or a sewn assembly, both with a variation of seaming capabilities.

# "TEMP-SET"® COVERS

## Refining & Petro-Chemical



Thermal Image Before Cover



Thermal Image After Cover



Heat Exchanger  
Channel Head Covers



Field Installation



Valve Cover

## Marine & Offshore



Marine Exhaust Y



Manifold, Exhaust &  
Expansion Joint



Offshore Drilling Jackup  
Engine Room



Semi-Submersible  
Engine Exhaust

## Engine Manufacturers



Manifold Cover



Turbo Cover



Caterpillar Manifold



Caterpillar Manifold



Aftercooler



Turbo / Manifold / Adapter



EMD 645 E5



Detroit Engine  
Exhaust

## Transportation



Maxim Silencer



Turbo Air Intake



Custom Fitted



Fire Pumps



SUPERIOR ENERGIES, INC.

1-800-BUY-SEI1  
1-800-289-7341  
Ph: 409-962-8549  
Fax: 409-962-4027

# "TEMP-SET"® COVERS

## Power Generation



Siemens SGT300



Siemens SGT 400



Turbine Exhaust



Turbine Compressor



Westinghouse 501 AA Complete



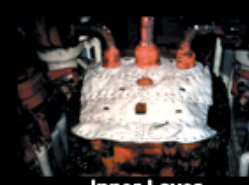
501 Exhaust Cone



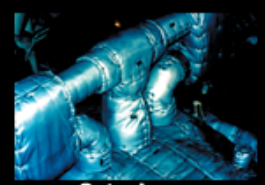
501 AA Project



501F Project



Inner Layer  
Steam Turbine



Outer Layer  
Steam Turbine

## Military Defense



Hot Gas Gasket  
Boeing 707



Boiler Cargo Ship



Personnel Carrier Intake



ICBM Silo Cover



Exhaust Collector Navy

## Pipeline Transmission



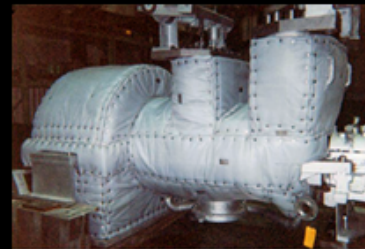
Elliott Compressor After



Elliott Compressor Before



Compressor



Compressor Gen



57 Megawatt Outer Layer



57 Megawatt Inner Layer

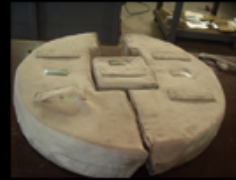
## Fabrication



Custom Parts



Custom Parts



Internal Heater Panel



Form Fitted Flange Cover



One  
Piece  
Sewn  
Const.  
Valve  
Cover



Sewing Capabilities



Hog Ring Construction



Special Sizing Assembly



Tapered Construction



Lacing Anchor Assembly



Sewn Flap Assembly



Hog Ring Staple Assembly



Custom Assembly



SUPERIOR ENERGIES, INC.

1-800-BUY-SEI1  
1-800-289-7341  
Ph: 409-962-8549  
Fax: 409-962-4027