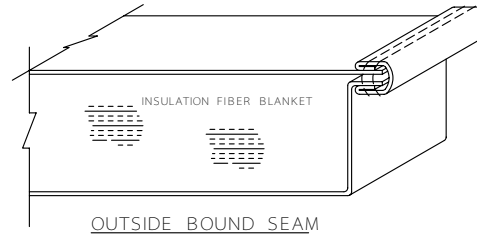
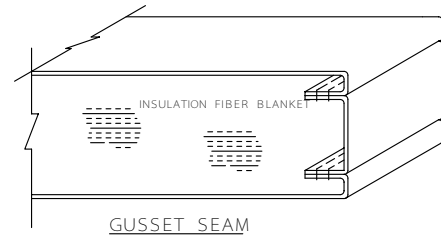


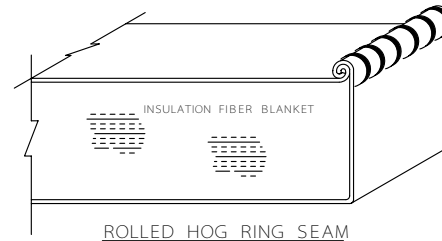
CLOSING SEAM



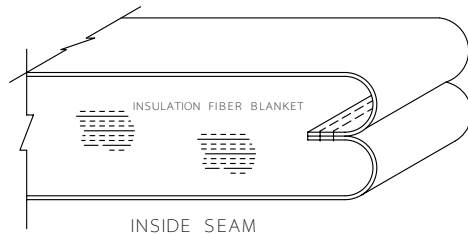
OUTSIDE BOUND SEAM



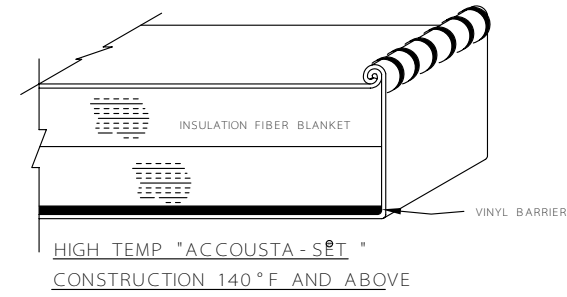
GUSSET SEAM



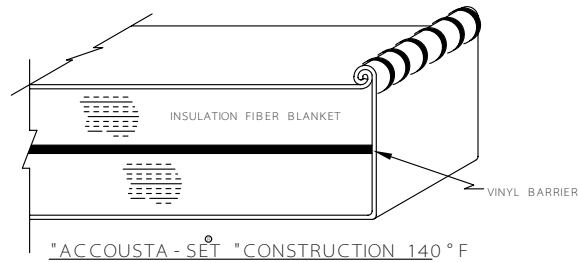
ROLLED HOG RING SEAM



INSIDE SEAM



HIGH TEMP "ACCOUSTA-SET "
CONSTRUCTION 140 °F AND ABOVE



"ACCOUSTA-SET "
CONSTRUCTION 140 °F
AND BELOW (AFTER 1" THK BLANKET)

SEI

SUPERIOR ENERGIES INC.
MANUFACTURING METHODS